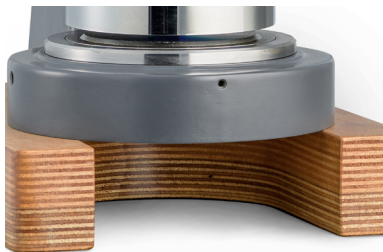


Circular Sample Cutters

MODEL 22-25

Circular punch

This puncher makes a sample in seconds. The instrument is mostly sold in a circular 100 cm² version, but can be supplied in different sizes and even with a square blade. The blade easily cuts paper or corrugated, but it is also suitable for aluminum, non-woven and even harder materials. The instrument is available in a manual and pneumatic version.



Paper tray

Since the samples fall on the table after being cut, you can continue cutting several samples in a row without having to remove the samples first.



Sharp sample

The blades are made of hardened steel. This gives them a sharp edge for years giving you an accurate sample.



Pneumatic or manual

The frame of the cutter is solid and robust. The blades can be replaced making it possible to use the cutter for over 35 years.

Specifications

Model	22-25 Series
Max sample thickness	10 mm (depending on material strength)
Dimensions	320 x 750 x 220 mm (13 x 30 x 9 in)
Weight	36 kg (80 lbs)
Instrument can be bolted onto table	

Available dimensions

- 22-25-00-0001 Circular Sample Cutter 100 cm² Pneumatic
- 22-25-00-0002 Circular Sample Cutter 100 cm² Manual

**MESSMER
BÜCHEL**

Vertrieb in Deutschland durch:
Luhne Messtechnik
Inhaber: Herr Dipl.-Ing.(FH) Stefan Luhne
Kölnerstrasse 167
D-41199 Mönchengladbach

**IP INDUSTRIAL
PHYSICS**

Telefon: +49 (0)2166 / 68 18 88
Telefon: +49 (0)2166 / 68 18 20
Telefax: +49 (0)2166 / 146 51 70
Email: info@luhne-messtechnik.de
Internet: www.luhne-messtechnik.de