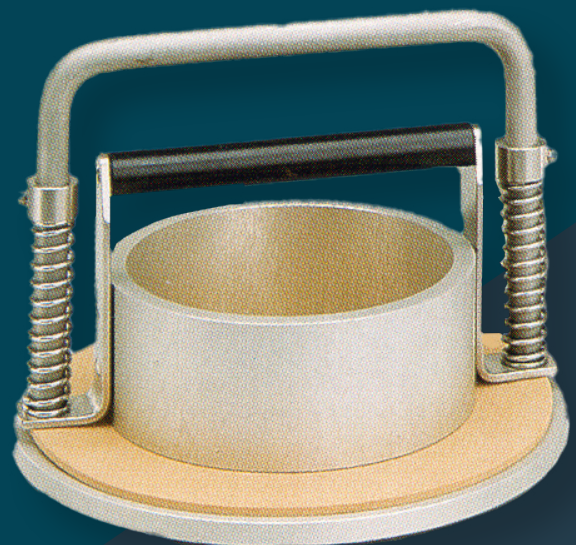




Manual Clamp



Hand Roll



Automatic Clamp

Cobb Sizing Testers

Models 61-04 and 61-05

Ordering Information:

Automatic Clamping

Used for	Description	Catalog Number
Paper	Cobb Size Tester for Paper, with automatic clamping and release. Area within cylinder 100 square centimeters.	61-05-00-0002
Board	Cobb Sizing Tester for Corrugated feature a single handed automatic clamping and release system for ease use. An increased thickness rubber gasket is supplied.	61-05-00-0001

Manual Clamping

Size(s)	Description	Catalog Number
100 sq. cm	Cobb Sizing Tester with 100 sq. cm. cylinder and gasket. Per TAPPI T 441 10,	61-04-00-0002
10, 25, 100 sq. cm	Cobb Sizing Tester. Includes 100, 25, and 10 square centimeter cylinders and gaskets. Meets T 441 and T 2045	61-04-00-0001
10, 25, 100 sq. cm	Cobb Sizing Tester. Includes 100, 25, and 10 square centimeter cylinders, gaskets, 10 kg Roller and 300 Sheets Blotting Paper. Meets T 441 and T 2045	61-04-00-0003

Required Accessories

	Description	Catalog Number
Stainless Steel Hand Roll	Hand Roll – Couch Roller for Cobb Sizing tester. Weight of roller complies with TAPPI standard specifications, 10kg. +/-5 kg.)	61-04-01
Blotting Paper	203x203mm (8" X 8"), Package of 1200 sheets.	61-04-05

Water absorptiveness (Cobb value) is the mass of water absorbed in a specific time by a 1 sq. meter sample of paper, board or corrugated under conditions specified in standards such as TAPPI T 441. Cobb sizing testers provide a simple, standardized method for fast determination of the quantity of water absorbed by a paper or board in a given time.

Features:

- Single-handed automatic clamping and release
- Manual clamping and sample positioning

Applications:

- Paper, board, corrugated

Standards

- ISO 535, DIN EN 20 535, TAPPI T 441 and T 2045

Instrument Size:

Manual Clamping:

Weight:	2kg (4.4lb)
Dimensions:	140x140x80mm DxWxH (5.5x5.5x3in.)

Automatic Clamping:

Weight:	2kg (4.4lb)
Dimensions:	200x200x180mm DxWxH (8x8x7in.)

Vertrieb in Deutschland durch:



Luhne Messtechnik e.K.
Neusser Straße 103
41363 Jüchen
02165/1719972

info@luhne-messtechnik.de
www.luhne-messtechnik.de